

The six puzzles on this page are solitaire versions of the classic paper-and-pencil game of Battleships. Each grid represents a section of ocean in which a fleet is hiding. This fleet consists of one battleship (four grid cells in length), two cruisers (three cells each), three destroyers (two cells each), and four submarines (one cell each). The ships may be oriented either horizontally or vertically, and no two ships can occupy adjacent grid cells, *not even diagonally*. The digits along the grid's perimeter indicate the number of cells in the corresponding rows and columns that are occupied by vessels.

You'll notice that some "shots" have been taken to start you off. These may show water (indicated by wavy lines), a complete sub (a circle), the bow or stern of a ship (a rounded-off square), or a midsection of a battleship or cruiser (a square). The puzzles get harder as you go. Can you reach the rank of admiral by locating all six fleets?

ANSWERS, PAGE 64



Water



Submarine

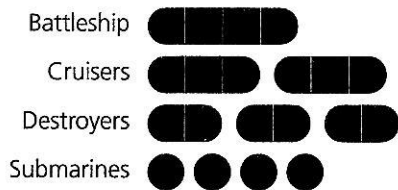
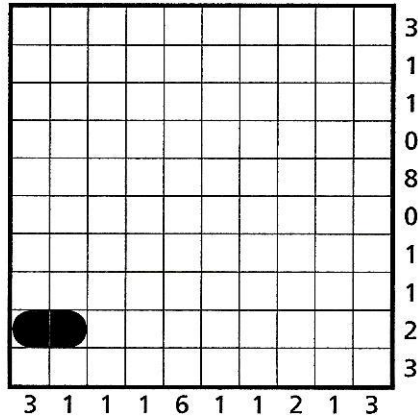


Middle of a ship (will continue either left and right or up and down)

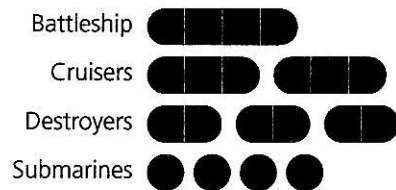
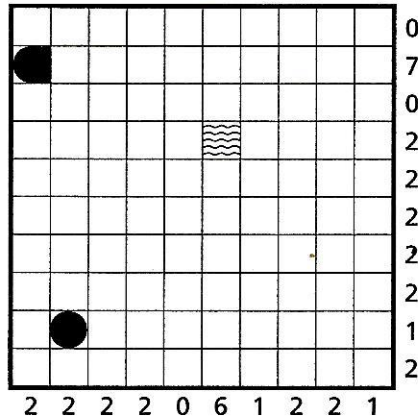


End of a ship (will continue in the direction of the flat side)

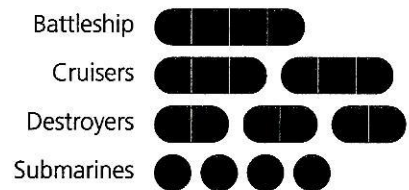
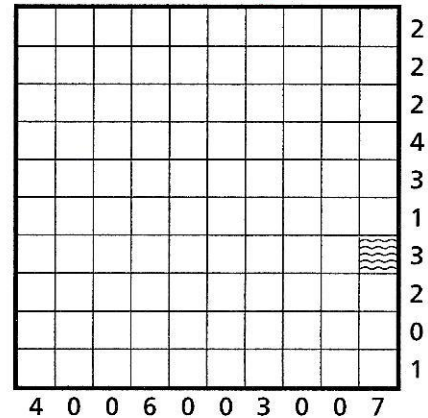
1-Seaman



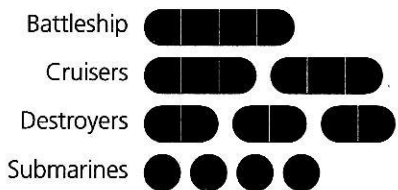
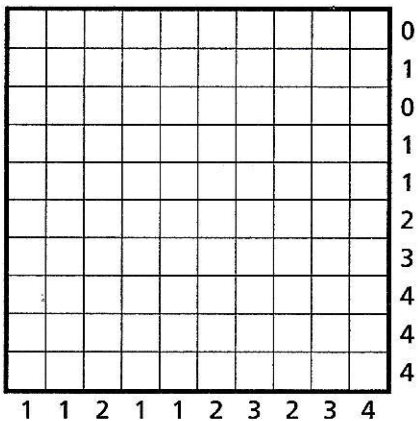
2-Petty Officer



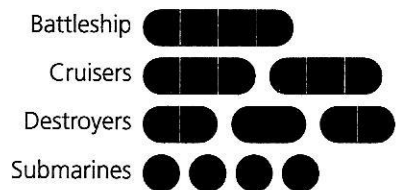
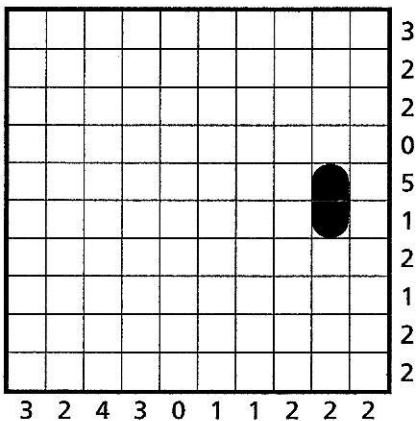
3-Ensign



4-Captain



5-Commodore



6-Admiral

